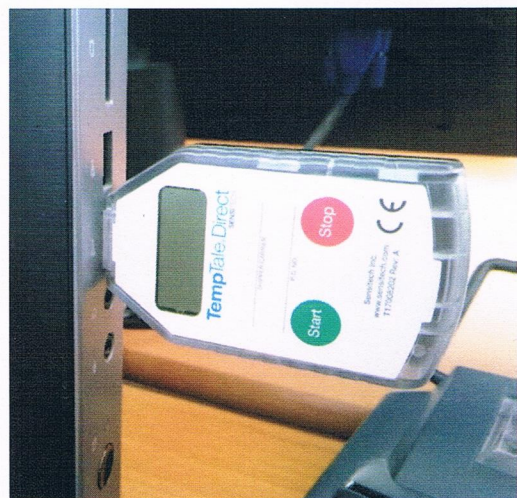


## **USB TEMPERATURE REGISTER – DIRECT READING**

For a perfect control of the transport conditions of your goods without worry about software or reading kit: the USB temperature register is ready to use immediately upon arrival.

- Integrated USB interface for direct connection to any computer or “plug-and-play” printer;
- Secured and quick download of encrypted data files for trip review and analysis;
- Water resistant and safe for incidental food contact;
- Easy-to-read LCD screen for visual interrogation;
- Fully traceable to NIST standards assures data accuracy;
- Meets DO-160G standard for air transport;
- Data file compatibility with supplier’s software tools for comprehensive data analysis and secure record keeping;
- Standard shipments monitoring: 77 days (up to 180 days on special request);
- Packaging per unit or boxes of 20 pcs.





<b>TECHNICAL CHARACTERISTICS</b>	
<b>Monitor recording options</b>	Single use
<b>Temperature measurement range</b>	-30°C to 70°C (-22°F to 158°F)
<b>Temperature accuracy range</b>	+/- 0,5°C from -10°C to +30°C (+/- 0,9 from -14°F to +86°F) +/-1°C from -30°C to -10°C (+/- 1,8 from -22°F to +14°F) +/- 1°C from 30°C to 70°C (+/- 1,8 from +86°F to +158°F)
<b>Temperature resolution</b>	0,1°C/F over full temperature measurement range
<b>Data memory type</b>	Non-volatile flash memory
<b>Data storage capacity</b>	8000 data points
<b>Battery life/Type</b>	Six months operating life / 3,0V lithium battery - non - replaceable
<b>Monitor validity life</b>	1 year (certificate available on request)
<b>Data sampling interval</b>	Programmable from 30 seconds up to a maximum of 30 minutes
<b>Housing</b>	Water resistant (IP64 with protective cap) Safe for incidental food contact
<b>Optional start-up delay</b>	0 sec. to 24 H
<b>LCS indicators</b>	Running/stopped - OK status and Alarm one - Marked event
<b>Start-up options</b>	Manual push button or automatic launch option
<b>Alarm function</b>	Programmable high and low limits Alarm is triggered when temperature exceeds set limits
<b>Typical dimensions</b>	L 9,78 cm x W 4,95 cm x H 1,78 cm (3,85"x1,95"x0,7")
<b>Weight</b>	48,2 grams / 1,7 ounces
<b>Certifications and Industry Standards</b>	ISO, CE, EN12830, DO-160G, NIST
<b>Minimum system requirements</b>	Windows PC W/Windows 7 or + / Adobe Reader 9.0 or +
<b>Data analysis software</b>	TempTale Manager Desktop version 7.4 or +, ColdStream Data Management version 1.8 or +
<b>Computer interface</b>	USB 2.0, A-type plug